

Dell Pro Rugged 12 Tablet

RA02260

Setup and Specifications

Notes, cautions, and warnings

 **NOTE:** A NOTE indicates important information that helps you make better use of your product.

 **CAUTION:** A CAUTION indicates either potential damage to hardware or loss of data and tells you how to avoid the problem.

 **WARNING:** A WARNING indicates a potential for property damage, personal injury, or death.

Chapter 1: Views of Dell Pro Rugged 12 Tablet RA02260	5
Right view	5
Left view	6
Top view	6
Front view	8
Back view	10
SIM card slot	12
Bottom view	12
Locate the Service Tag or Express Service Code label of your tablet	13
Battery-charging status light	13
Tips for using the port covers	14
Chapter 2: Set up your Dell Pro Rugged 12 Tablet RA02260	15
Chapter 3: Specifications of Dell Pro Rugged 12 Tablet RA02260	17
Dimensions and weight	17
Processor	17
Chipset	19
Operating system	19
Memory	19
External ports and slots	20
Internal slots	20
Ethernet (optional)	21
Wireless module	21
WWAN module	21
GPS module	23
Setting up the GPS	23
Splitting the GPS COM port	27
Audio	31
Storage	31
Media-card reader	31
Camera	32
Power adapter	33
Power adapter requirements of Dell Pro Rugged 12 Tablet RA02260	33
Battery	34
Power requirements	35
Display	35
Fingerprint reader (optional)	36
Sensors	36
GPU—Integrated	37
External display support	37
Hardware security	37
Smart-card reader	38
Contactless smart-card reader	38

Contacted smart-card reader.....	40
Operating and storage environment.....	41
ComfortView Plus.....	42

Chapter 4: Getting help and contacting Dell..... 43

Chapter 5: Revision history..... 44

Views of Dell Pro Rugged 12 Tablet RA02260

Right view

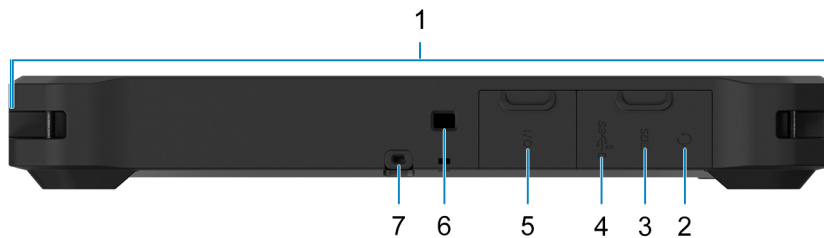


Figure 1. Right view

CAUTION: Do not open the I/O-port cover beyond a 180-degree angle, as it can cause mechanical damage or compromise the hinge integrity.

NOTE: Ensure the I/O-port cover is securely closed before placing the unit in a case or enclosure.

1. Tether hooks

Secures accessories such as styluses, hand straps, or barcode scanners.

2. Global headset jack

Supports connection of headphones or combo headsets with integrated microphone for audio input and output.

3. microSD-card slot

Allows you to insert a microSD card to expand storage or transfer files. It can read from and writes to the microSD card. The tablet supports the following card types:

- microSecure Digital (microSD)
- microSecure Digital High Capacity (microSDHC)
- microSecure Digital Extended Capacity (microSDXC)

4. USB 3.2 Gen 1 (5 Gbps) port with PowerShare

Supports data transfer speed up to 5 Gbps for connecting external storage and peripheral devices, and provides power output capability for charging compatible devices even when the tablet is turned off.

5. Side I/O bay (optional)

Allows you to select one of the following modules to extend the connectivity and functionality of your tablet .

- HDMI 2.1 (TMDS) port - Connect to a TV, external display, or another HDMI-in enabled device. Provides video and audio output.
- USB 3.2 Gen 1 (5 Gbps) port - Supports data transfer speed up to 5 Gbps for connecting external storage and peripheral devices.

6. Security-cable slot (wedge-shaped)

Provides a slot for a cable lock to secure the tablet against unauthorized removal or movement.

7. Stylus slot

Dock the stylus into the slot after use.

Left view

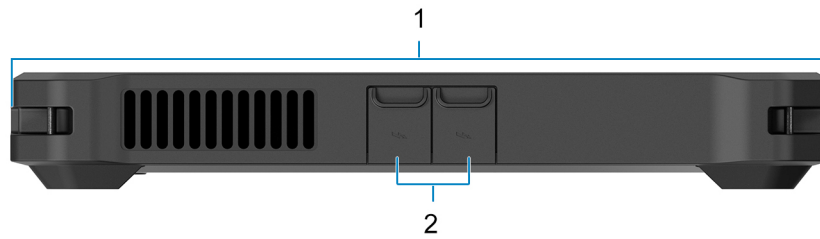


Figure 2. Left view

CAUTION: Do not open the I/O-port cover beyond a 180-degree angle, as it can cause mechanical damage or compromise the hinge integrity.

NOTE: Ensure the I/O-port cover is securely closed before placing the unit in a case or enclosure.

1. Tether hooks

Secures accessories such as styluses, hand straps, or barcode scanners.

2. Thunderbolt 4 (40 Gbps) ports with DisplayPort Alt Mode/USB4/Power Delivery:

Transfers data at high speed, charges your device, and connects to external displays—all through one port:

- Thunderbolt 4: Offers up to 40 Gbps data transfer speed, enabling ultra-fast file transfers, external SSDs, and high-performance peripherals.
- DisplayPort Alt Mode: Allows video output to external monitors (supports up to dual 4K@60Hz or single 8K@60Hz displays), making it ideal for docking stations or multi-monitor setups. Compatible with USB-C to HDMI/DP adapters and docking stations.
- USB4 Compatibility: Ensures broad support for USB devices with efficient bandwidth sharing and backward compatibility with USB 3.2, USB 2.0, and Thunderbolt 3.
- Power Delivery (PD): Supports charging of laptops, tablets, and other devices with up to 100 W power through the same port, reducing the need for separate power adapters.

NOTE: A USB Type-C to DisplayPort adapter (sold separately) is required to connect a DisplayPort device.

NOTE: You can connect a Dell Docking Station to the Thunderbolt 4 ports. For more information, see [Dell Support Site](#).

NOTE: Thunderbolt 4 supports two 4K displays or one 8K display.

Top view

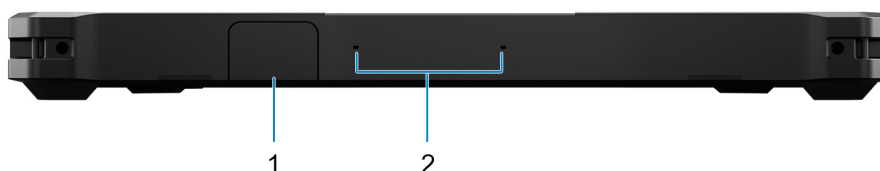


Figure 3. Top view

CAUTION: Do not open the I/O-port cover beyond a 180-degree angle, as it can cause mechanical damage or compromise the hinge integrity.

NOTE: Ensure the I/O-port cover is securely closed before placing the unit in a case or enclosure.

1. Top I/O bay (optional)

Allows you to select one of the following modules to extend the connectivity and functionality of your tablet.

- RJ45 Ethernet (1 GbE): Plug in a network cable for wired LAN or Internet access at up to 1 Gbps.
- With Rugged Fischer USB 3.0 (5 Gbps) port - Provides a secure, high-speed connection for USB 3.0 devices, supporting data transfer rates up to 5 Gbps.

Table 1. Rugged Fischer USB 3.0 port

Description	Values
Port type	Push-pull
Mounting style	MR11 – Panel mounted
Connector size	08 – Size 8
Keying code	Code 1

- USB 3.2 Gen 1 (5 Gbps) port: Attach external storage, printers, or other peripherals for high-speed data transfer.
- 1D/2D barcode scanner: Scan and decode barcodes directly into alphanumeric data.
- Blank module: Leave the bay empty or install a custom expansion.

2. Microphones

Provide digital sound input for audio recording and voice calls.

Front view



Figure 4. Front view

1. Privacy shutter

Features a manual privacy shutter that can slide to access the camera lens and slide over to block its view and safeguard your privacy when the camera is not in use.

2. RGB camera

Allow users to conduct video calls, capture still images, and record video content for communication and documentation purposes.

3. Infrared camera

Enables secure, contactless user authentication by supporting facial recognition through Windows Hello.

4. Infrared emitter

Emits infrared light to support the infrared camera in detecting facial features and tracking motion for secure and responsive functionality.

5. Camera-status light

Illuminates automatically to indicate active camera usage, alerting users when the camera is recording or streaming.

6. Ambient-light sensor

Detects ambient lighting and dynamically regulates display brightness and keyboard backlight to enhance visual comfort and conserve power.

7. Display

Provides visual output.

8. Right speaker

Provides audio output.

9. P3—User programmable button 3


Supports two types of input: Short press, and long press. The button can be configured to perform up to two different tasks depending on the type of touch interaction.

10. P2—User programmable button 2

Supports two types of input: Short press, and long press. The button can be configured to perform up to two different tasks depending on the type of touch interaction.

11. P1—User programmable button 1

Supports two types of input: Short press, and long press. The button can be configured to perform up to two different tasks depending on the type of touch interaction.

 **NOTE:** You can configure the P1/P2/P3 buttons using Dell Rugged Control Center. For more information about Dell Rugged Control Center, see the Rugged Control Center User's Guide and Quick Start Guide at [Rugged Control Center](#).

12. Increase-volume button

Allow users to adjust the volume to a higher level.

13. Decrease-volume button

Allow users to adjust the volume to a lower level.

14. Increase brightness

Allow users to increase the brightness.

15. Decrease brightness

Allow users to decrease the brightness.

16. Left speaker

Provides audio output.

Back view

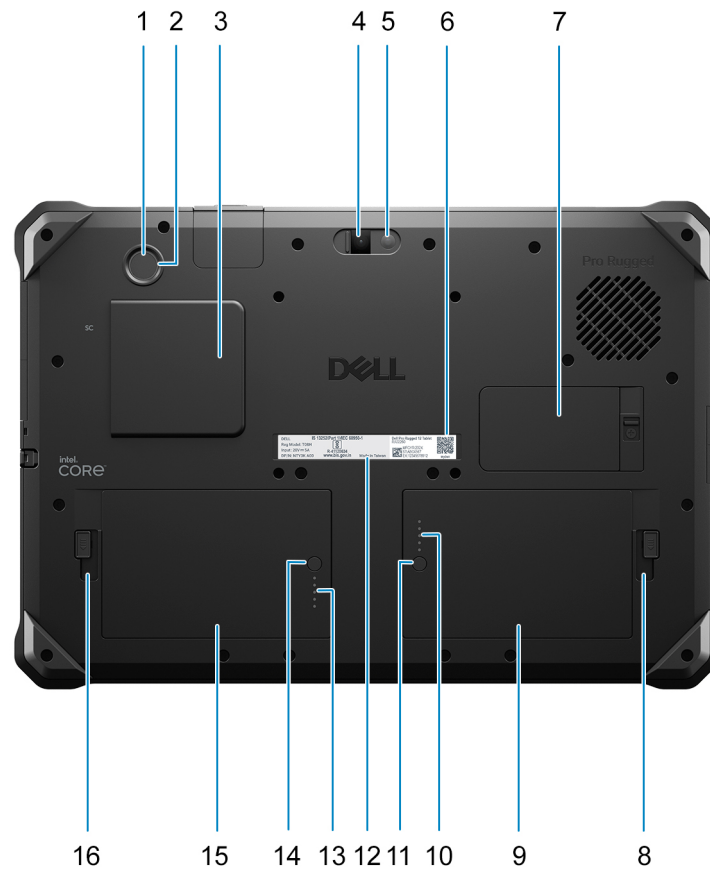


Figure 5. Back view

1. Power button with optional fingerprint reader

Provides standard power control (on/off). If equipped with a fingerprint reader, it also supports secure user authentication over a single touch. To verify fingerprint functionality during diagnostics, check login behavior at the OS level and confirm sensor detection through Device Manager or BIOS settings.

NOTE: The power-button behavior can be customized in the operating system.

NOTE: Press and hold the power button, and then press the volume down button to unlock. This hot key performs the same function as Ctrl+Alt+Del.

2. Power button LED

Indicates battery charging status.

3. Smart-card reader slot (optional)

Supports ISO/IEC 7816-compliant smart cards for secure user authentication. When a compatible card is inserted, the system can perform secure login, verify digital signatures, and manage access control. Commonly used in enterprise environments that require enhanced security protocols.

4. Camera

Allow users to make video calls, capture photos, or record videos.

5. Camera flash light

An LED light that activates during photo capture to improve visibility and image quality in low-light environments. It works in sync with the camera shutter for optimal exposure.

6. MyDell QR code: MyDell is your hub for content personalized to your Dell Pro Rugged 12 Tablet RA02260, including videos, articles, manuals, and easy access to support.

7. Solid-state drive door (optional)

Provides physical access to the SSD compartment, allowing users to install, replace, upgrade, or secure the internal solid-state drive.

8. Battery-release latch

Allow users to lock or unlock the battery in the battery bay.

9. Battery

Supplies power to the tablet for portable operation, supporting system functionality during AC power loss or mobile use.

10. Battery-status light

Indicates the current battery charge level and charging status through LED signals, helping users monitor power availability and charging progress.

- Five green LEDs—81-100%
- Four green LEDs—61-80%
- Three green LEDs—41-60%
- Two green LEDs—21-40%
- One green LED—5-20%
- No green LED—0-4%

11. Battery-charge status button

Activates the battery status indicator LEDs, allowing users to check the current charge level when the button is pressed.

12. Service Tag label

The Service Tag is a unique alphanumeric identifier that enables Dell service technicians to identify the hardware components in your tablet and access warranty information.

13. Battery-status light

Indicates the current battery charge level and charging status through LED signals, helping users monitor power availability and charging progress.

- Five green LEDs—81-100%
- Four green LEDs—61-80%
- Three green LEDs—41-60%
- Two green LEDs—21-40%
- One green LED—5-20%
- No green LED—0-4%

14. Battery-charge status button

Activates the battery status indicator LEDs, allowing users to check the current charge level when the button is pressed.

15. Battery

Supplies power to the tablet for portable operation, supporting system functionality during AC power loss or mobile use.

16. Battery-release latch

Allow users to lock or unlock the battery in the battery bay.

SIM card slot

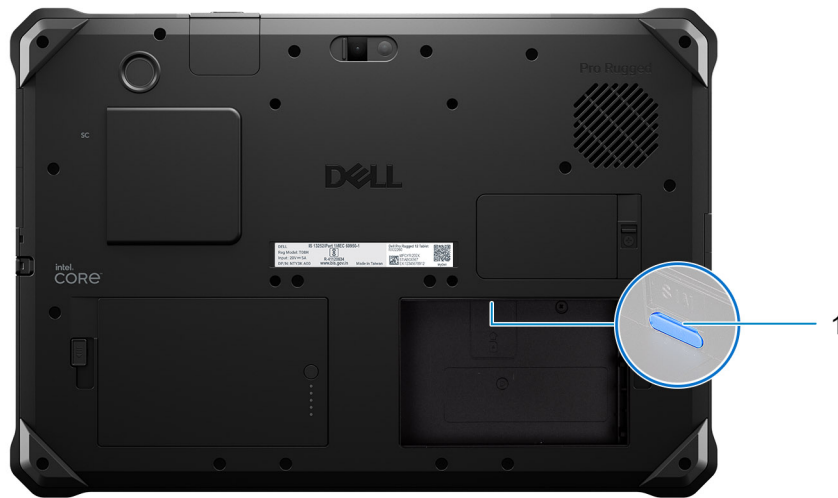


Figure 6. SIM card slot

1. SIM card slot

Insert a SIM card to connect to a mobile broadband network.

NOTE: For detailed instructions on how to remove and install the SIM card, see the *SIM card* section in the Service Manual.

Bottom view

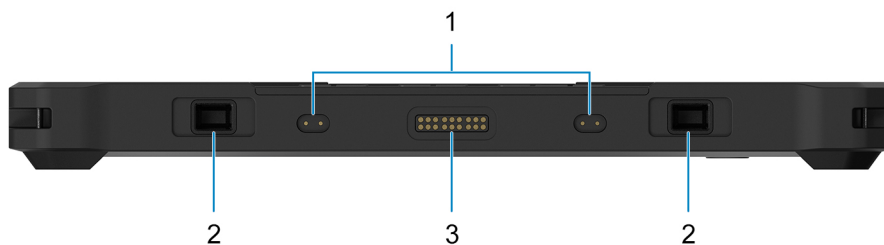


Figure 7. Bottom view

1. Radio frequency pass-through connectors (optional)

Allow automatic rerouting of WWAN, WLAN, and GPS antenna signals from internal to external antennas when the device is docked, enabling improved signal quality and external antenna integration.

2. Keyboard latch interface

Secures and connects the detachable keyboard to the tablet for stable input and reliable communication.

3. Docking connector

Connects the keyboard for expanded functionality.

Locate the Service Tag or Express Service Code label of your tablet

The service tag is a unique alphanumeric identifier that allows Dell service technicians to identify the hardware components in your tablet and access warranty information. The Express Service Code is a numeric version of the Service Tag.

For more information about how to find the Service Tag of your tablet, see [Dell Support Site](#).

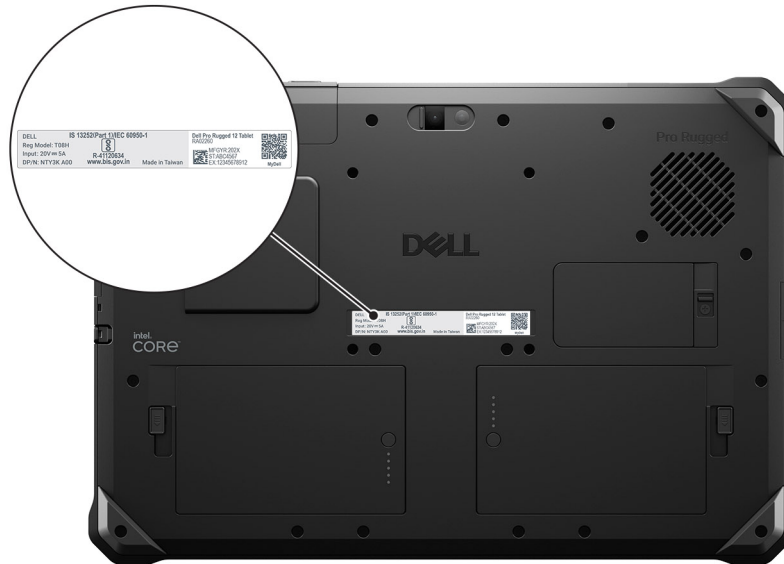


Figure 8. Service Tag/Express Service Code location

Battery-charging status light

The following table lists the battery-status light of your Dell Pro Rugged 12 Tablet RA02260.

The battery-charging status light on the Dell Pro Rugged 12 Tablet RA02260 is a small LED indicator around the power button that shows the current battery level and charging status based on the power source and system state.

Table 2. Battery-charging status light behavior

Power source	LED behavior	System power state	Battery charge level
AC adapter	Off	S0/MS/S4/S5	100%
AC adapter	Solid green	S0/MS/S4/S5	< 100%
DC (battery only)	Off	S0/MS/S4/S5	11-100%
DC (battery only)	Solid amber	S0/MS	< 10%

- S0 (ON): The tablet is turned on.
- Modern Standby (MS): The screen is off, and the tablet is in sleep mode.
- S4 (Hibernate): The tablet consumes the least power in the Hibernate state than in the ON or OFF state. The tablet is almost in the OFF state. The context data is written to a storage device, allowing you to resume from where you left after the tablet is turned on.
- S5 (OFF): The tablet is in a shutdown state.

Tips for using the port covers

The port covers on your Dell Pro Rugged 12 Tablet RA02260 ensure the durability and reliability of your computer in harsh environments. Port covers seal the I/O ports to prevent dust and moisture from entering and damaging the connectors and internal components. The following sections provide tips for using the port covers on your tablet.

Opening the port cover

When you open the port cover, ensure that the port cover is not opened beyond 180 degrees.

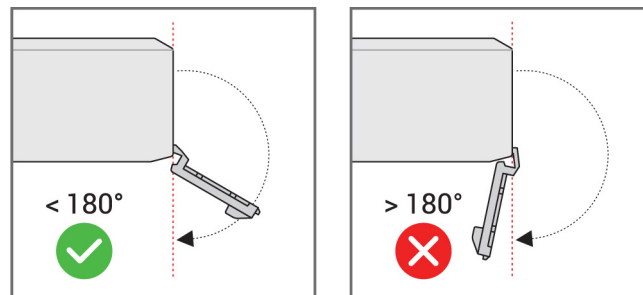


Figure 9. Opening the port cover

Closing the port cover

Before you move the tablet from one location to another location, ensure that all port covers are closed securely.

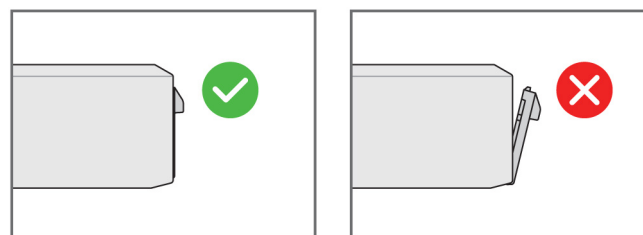


Figure 10. Closing the port cover

Set up your Dell Pro Rugged 12 Tablet RA02260

About this task

i **NOTE:** The images in this document may differ from your tablet depending on the configuration you ordered.

Steps

1. Connect the power adapter and press the power button.



Figure 11. Connect the power adapter and press the power button

i **NOTE:** The battery may go into power-saving mode during shipment to conserve charge on the battery. Ensure that the power adapter is connected to your tablet when it is turned on for the first time.

2. Finish the operating system setup.

Follow the on-screen instructions to complete the setup. When setting up, Dell Technologies recommends that you:





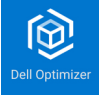

- Connect to a network for Windows updates.

i **NOTE:** If connecting to a secured wireless network, enter the password for the wireless network access when prompted.

- If connected to the Internet, sign in with or create a Microsoft account. If not connected to the Internet, create an offline account.
- On the **Support and Protection** screen, enter your contact details.

3. Locate and use Dell apps from the Windows Start menu—Recommended.

Table 3. Locate Dell apps


Resources	Description
	<p>Dell Product Registration Register your tablet with Dell.</p>
	<p>Dell Help & Support Access help and support for your tablet.</p>
	<p>SupportAssist SupportAssist keeps your tablet running at its best by optimizing settings, detecting issue, and removing viruses. It also notifies when updates are available for your tablet. SupportAssist proactively checks the health of your tablet hardware and software. When an issue is detected, the necessary system state information is sent to Dell to begin troubleshooting. SupportAssist is preinstalled on most of the Dell devices running the Windows operating system. For more information, see SupportAssist documentation at Dell Support Site.</p> <p>NOTE: In SupportAssist, click the warranty expiry date to renew or upgrade your warranty.</p>
	<p>Dell Update Updates your tablet with critical fixes and latest device drivers as they become available. For more information about using Dell Update, see the product guides and third-party license documents at Dell Support Site.</p>
	<p>Dell Optimizer Dell Optimizer is an AI-based software application that allows you to customize your tablet settings for power and battery, and more.</p> <p>For Dell Pro Rugged 12 Tablet RA02260 with Dell Optimizer, you can:</p> <ul style="list-style-type: none"> • Tune the performance, power consumption, cooling, and fan noise with selectable thermal modes. • Download and redeem the apps that are purchased with your tablet. <p>For more information about configuring and using these features, search for <i>Dell Optimizer</i> at Dell Support Site.</p>
	<p>Dell Rugged Control Center (RCC) The Dell Rugged Control Center (RCC) is a specialized application that is designed for Dell Pro Rugged laptops and tablets. RCC enables you to configure a range of settings on your Rugged laptop or tablet to suit demanding workflows in rugged environments.</p> <p>For more information about configuring these settings, search for Dell Rugged Control Center User's Guide at the Dell Support.</p>

Specifications of Dell Pro Rugged 12 Tablet RA02260

Dimensions and weight

The following table lists the height, width, depth, and weight of your Dell Pro Rugged 12 Tablet RA02260.



Table 4. Dimensions and weight

Description	Values
Height:	
Front height	29.60 mm (1.17 in.)
Rear height	29.60 mm (1.17 in.)
Width	301.00 mm (11.85 in.)
Depth	208.00 mm (8.19 in.)
Weight  NOTE: The weight of your tablet depends on the configuration that you ordered.	Minimum—1.31 kg (2.89 lb)

Processor

The following table lists the details of the processors supported by your Dell Pro Rugged 12 Tablet RA02260.

Table 5. Processor

Description	Option one	Option two	Option three	Option four	Option five
Processor type	Intel Core Ultra 7 268V, vPro Enterprise	Intel Core Ultra 7 266V, vPro Enterprise	Intel Core Ultra 5 238V, vPro Enterprise	Intel Core Ultra 5 236V, vPro Enterprise	Intel Core Ultra 5 226V
Processor wattage	24 W	24 W	24 W	24 W	24 W
Processor total core count	8	8	8	8	8
Performance-cores	4	4	4	4	4
Efficient-cores	4	4	4	4	4
Processor total thread count	8	8	8	8	8
 NOTE: Intel Hyper-Threading Technology is only available on Performance-cores.					
Processor speed	Up to 5 GHz	Up to 5 GHz	Up to 4.7 GHz	Up to 4.7 GHz	Up to 4.5 GHz
Performance-cores frequency					
Processor base frequency	2.2 GHz	2.2 GHz	2.1 GHz	2.1 GHz	2.1 GHz
Maximum turbo frequency	5 GHz	5 GHz	4.7 GHz	4.7 GHz	4.5 GHz
Efficient-cores frequency					
Processor base frequency	2.2 GHz	2.2 GHz	2.1 GHz	2.1 GHz	2.1 GHz
Maximum turbo frequency	3.7 GHz	3.7 GHz	3.5 GHz	3.5 GHz	3.5 GHz
Processor cache	12 MB	12 MB	8 MB	8 MB	8 MB
Integrated graphics	Intel Arc 140V Graphics	Intel Arc 140V Graphics	Intel Arc 130V Graphics	Intel Arc 130V Graphics	Intel Arc 130V Graphics
AI technology	Intel AI Boost	Intel AI Boost	Intel AI Boost	Intel AI Boost	Intel AI Boost
Neural Processing Units (NPUs)	Six-tile NPU, supporting up to 48 TOPs	Six-tile NPU, supporting up to 48 TOPs	Five-tile NPU, supporting up to 40 TOPs	Five-tile NPU, supporting up to 40 TOPs	Five-tile NPU, supporting up to 40 TOPs
 NOTE: Tera Operations Per Second (TOPS) is an AI performance metric that measures how many trillions of operations per second an AI processor can perform.					

Chipset

The following table lists the details of the chipset that is supported by your Dell Pro Rugged 12 Tablet RA02260.

Table 6. Chipset

Description	Values
Chipset	Integrated in the processor
Processor	Intel Core Ultra 7/5
DRAM bus width	64-bit
Flash EPROM	64 MB
PCIe bus	Up to PCIe 5.0

Operating system


Your Dell Pro Rugged 12 Tablet RA02260 supports the following operating systems:

- Windows 11 Home
- Windows 11 Pro
- Windows 11 Downgrade
- Ubuntu Linux 24.04 LTS

Memory

The following table lists the memory specifications of your Dell Pro Rugged 12 Tablet RA02260.

Table 7. Memory specifications

Description	Values
Memory slots	Memory on Package  NOTE: The memory is integrated on the system board and is not upgradable.
Memory type	LPDDR5x
Memory speed	8533 MT/s
Maximum memory configuration	32 GB
Minimum memory configuration	16 GB
Memory configurations supported	<ul style="list-style-type: none">• 16 GB: LPDDR5x, 8533 MT/s, dual channel• 32 GB: LPDDR5x, 8533 MT/s, dual channel

External ports and slots

The following table lists the external ports and slots on your Dell Pro Rugged 12 Tablet RA02260.

Table 8. External ports and slots

Description	Values
Network port	RJ45 Ethernet port (optional)
USB ports	<ul style="list-style-type: none"> Two Thunderbolt 4 (40 Gbps) ports with DisplayPort Alt Mode/USB4/Power Delivery One USB 3.2 Gen 1 (5 Gbps) port with PowerShare <p>i NOTE: Connect the USB Type-C power adapter to only one of the three USB Type-C ports.</p> <p>i NOTE: You can connect a Dell Docking Station to this port. For more information, search in the Knowledge Base Resource at Dell Support Site.</p>
Optional bay	<p>One optional top I/O bay:</p> <ul style="list-style-type: none"> RJ45 Ethernet port, 1 GbE Rugged Fischer USB 3.0 (5 Gbps) port USB 3.2 Gen 1 (5 Gbps) port 1D-2D barcode scanner Blank <p>One optional side I/O bay:</p> <ul style="list-style-type: none"> HDMI 2.1 (TMDS) port USB 3.2 Gen 1 (5 Gbps) port
Audio port	One global headset jack
Video port(s)	Supported using two Thunderbolt 4 ports with DisplayPort and the optional HDMI 2.1 TMDS port
Media-card reader	One microSD-card slot
Smart-card reader	One smart-card reader slot (optional)
Power-adaptor port	65 W AC/100 W AC adapter, USB Type-C i NOTE: You can connect a Dell Docking Station to this port. For more information, see the knowledge base article 000124295 at Dell Support Site .
Security-cable slot	One wedge-shaped lock slot
SIM-card slot	One nano-SIM card slot (optional)
Docking port	Supported


Internal slots

The following table lists the internal slots of your Dell Pro Rugged 12 Tablet RA02260.

Table 9. Internal slots

Description	Values
M.2	<ul style="list-style-type: none"> One M.2 2230 slot for solid-state drive

Table 9. Internal slots

Description	Values
	<ul style="list-style-type: none"> One M.2 2230 slot for Wi-Fi and Bluetooth card One M.2 3052 slot for WWAN card <p> NOTE: To learn more about the features of different types of M.2 cards, search Dell Support Site.</p>

Ethernet (optional)

The following table lists the wired Ethernet Local Area Network (LAN) specifications of your Dell Pro Rugged 12 Tablet RA02260.


Table 10. Ethernet specifications (optional)

Description	Values
Model	Intel Ethernet i219LM
Transfer rate	10/100/1000 Mbps

Wireless module


The following table lists the Wireless Local Area Network (WLAN) module that is supported on your Dell Pro Rugged 12 Tablet RA02260.

Table 11. Wireless module specifications

Description	Values
Model number	Intel BE201
Transfer rate	Up to 5760 Mbps
Frequency bands supported	2.4 GHz/5 GHz/6 GHz
Wireless standards	<ul style="list-style-type: none"> Wi-Fi 802.11a/b/g Wi-Fi 4 (Wi-Fi 802.11n) Wi-Fi 5 (Wi-Fi 802.11ac) Wi-Fi 6E (Wi-Fi 802.11ax) Wi-Fi 7 (Wi-Fi 802.11be)
Encryption	<ul style="list-style-type: none"> 64-bit/128-bit WEP AES-CCMP TKIP
Bluetooth wireless card  NOTE: The functionality of the Bluetooth wireless card may vary based on the operating system.	Bluetooth 5.4

WWAN module

The following table lists the Wireless Wide Area Network (WWAN) module that is supported in your Dell Pro Rugged 12 Tablet RA02260.

 **NOTE:** The WWAN module is available only on certain configurations and in certain regions.

NOTE: Availability of the eSIM feature on this module may vary depending on your region and the support that is offered by your mobile carrier.

NOTE: For instructions on how to setup SIM or eSIM connections on your tablet, see the *SIM/eSIM Setup Guide for Windows* available with your product documentation at [Dell Support Site](#).

Table 12. WWAN module specifications

Description	Values
Model number	Qualcomm Snapdragon X72 Global 5G (DW5934e)
Form factor	M.2 3052 Key-B
Host interface	PCIe Gen3
Network standard	NR FR1 (Sub6) FDD/TDD, LTE FDD/TDD, WCDMA/HSPA+, GPS/GLONASS/Galileo/Beidou
Transfer data rate	<ul style="list-style-type: none"> 5G NR: DL 4.14 Gbps/ UL 900 Mbps LTE: DL 2.0 Gbps (CAT20) / UL 211 Mbps (CAT18) UMTS: DL DC-HSPA+ Rel 8:42 Mbps / UL 5.76 Mbps
Operating frequency bands	<ul style="list-style-type: none"> NR (n1, n2, n3, n5, n7, n8, n12, n13, n14, n18, n20, n25, n26, n28, n29, n30, n38, n40, n41, n48, n66, n67, n70, n71, n75, n76, n77, n78, n79, n91, n92, n93, n94) LTE (B1, B2, B3, B4, B5, B7, B8, B12, B13, B14, B17, B18, B19, B20, B25, B26, B28, B29, B30, B32, B34, B38, B39, B40, B41, B42, B43, B46, B48, B66, B67, B68, B70, B71) WCDMA/HSPA+ (1, 2, 4, 5, 8)
Power supply	DC 3.135 V to 3.63 V, typical 3.30 V
SIM card	Supported through external SIM slot
eSIM with dual SIM (DSSA)	Supported (The availability of eSIM functionality embedded on the module is dependent on the region and specific carrier requirements)
Antenna diversity	Supported
Radio on/off	Supported
Wake On Wireless WAN	Not supported
Operating temperature	<ul style="list-style-type: none"> Normal operating temperature: -30°C to 70°C (-22°F to 158°F) Extended operating temperature: -40°C to 85°C (-40°F to 185°F) Storage temperature: -40°C to 85°C (-40°F to 185°F)
Antenna connector	<ul style="list-style-type: none"> WWAN main antenna x 1 WWAN diversity antenna x 1 4 x 4 MIMO antenna x 2
<p>NOTE: For instructions to find your tablet's International Mobile Equipment Identity (IMEI) number, search Dell Support Site.</p>	

GPS module

The following table lists the nFore NF6807Q module supported on your Dell Pro Rugged 12 Tablet RA02260.

Table 13. GNSS L1 (GPS, GLONASS, Galileo, and Beidou)

GNSS L1 (GPS, GLONASS, Galileo, and Beidou)	
Interface	UART
Performance	
Receiver type	L1
Navigation update rate (maximum)	1 Hz–10 Hz
Position accuracy	<ul style="list-style-type: none"> • 2 m (horizontal) • 3 m (vertical)
Supported protocol	NMEA
Security features	Anti-jamming
Absolute maximum ratings	
Power supply voltage	<ul style="list-style-type: none"> • 0 V (minimum) • 3.6 V (maximum)
Storage temperature	-40°C to 125°C (-40°F to 257°F)
Operating conditions	
Power supply voltage	<ul style="list-style-type: none"> • 3.0 V (minimum) • 3.6 V (maximum)
Operating temperature	-40°C to 85°C (-40°F to 185°F)

NOTE: For more information about how to set up GPS in Dell Rugged Control Center, see [Setting up the GPS](#).

NOTE: For more information about how to split the COM ports using Device Manager, see [Splitting the GPS COM port](#).

Setting up the GPS

About this task

Steps

1. Open **Dell Rugged Control Center**.

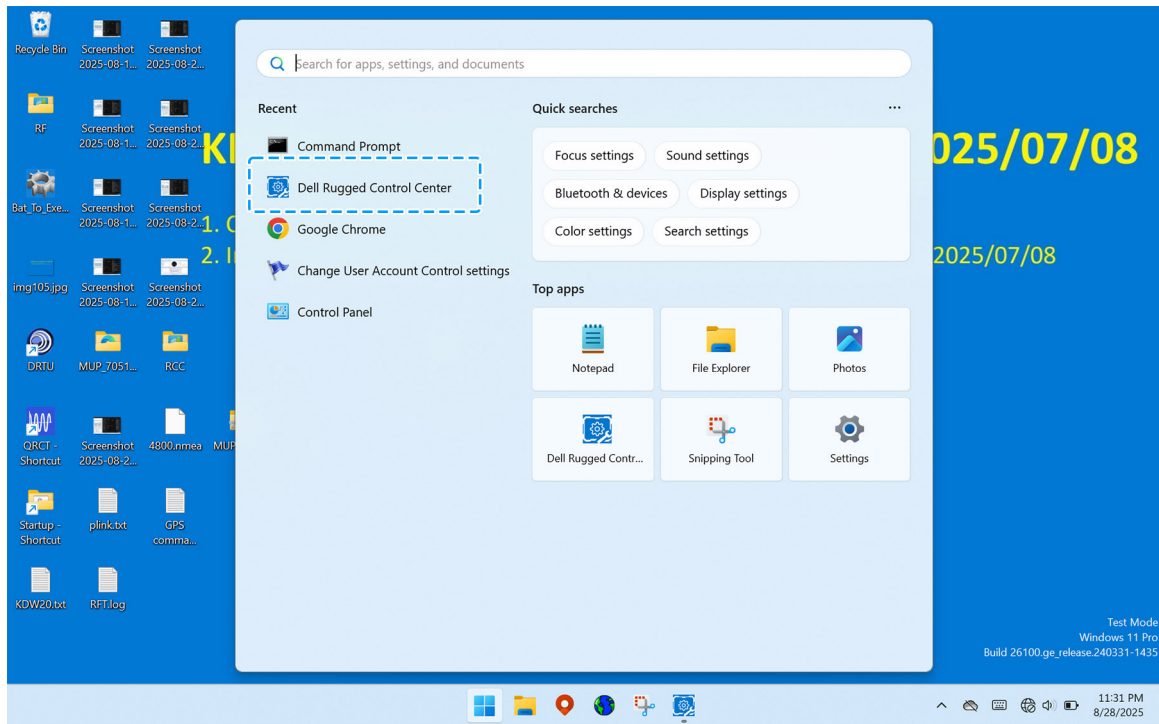


Figure 12. Dell Rugged Control Center

2. Select **PROGRAM** and click **GPS**.

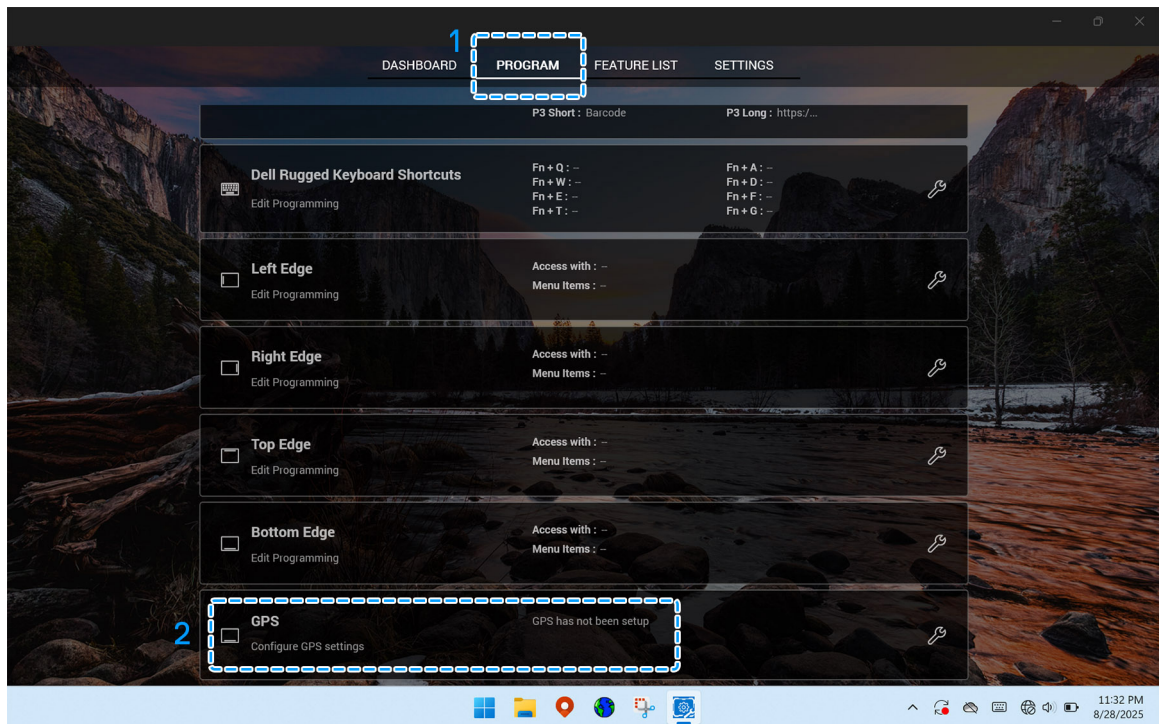


Figure 13. GPS

3. Set the fields to the following parameters:

Table 14. Set parameters

Steps	Fields	Parameters
1	COM PORT	GPS NEMA 9600 P1
2	Baud Rate	9600
3	Select Talker ID(s)	Select all satellites.
4	Connect	Toggle to ON.

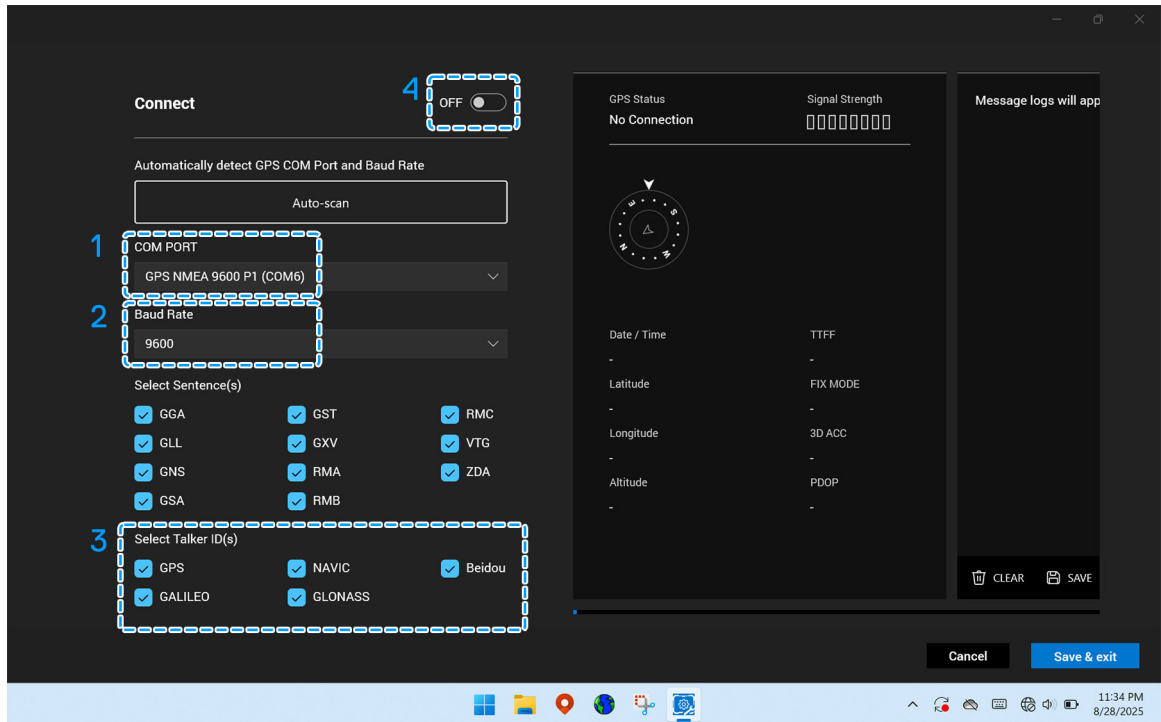


Figure 14. GPS

A dialog box opens requesting confirmation to configure GPS using the selected settings.

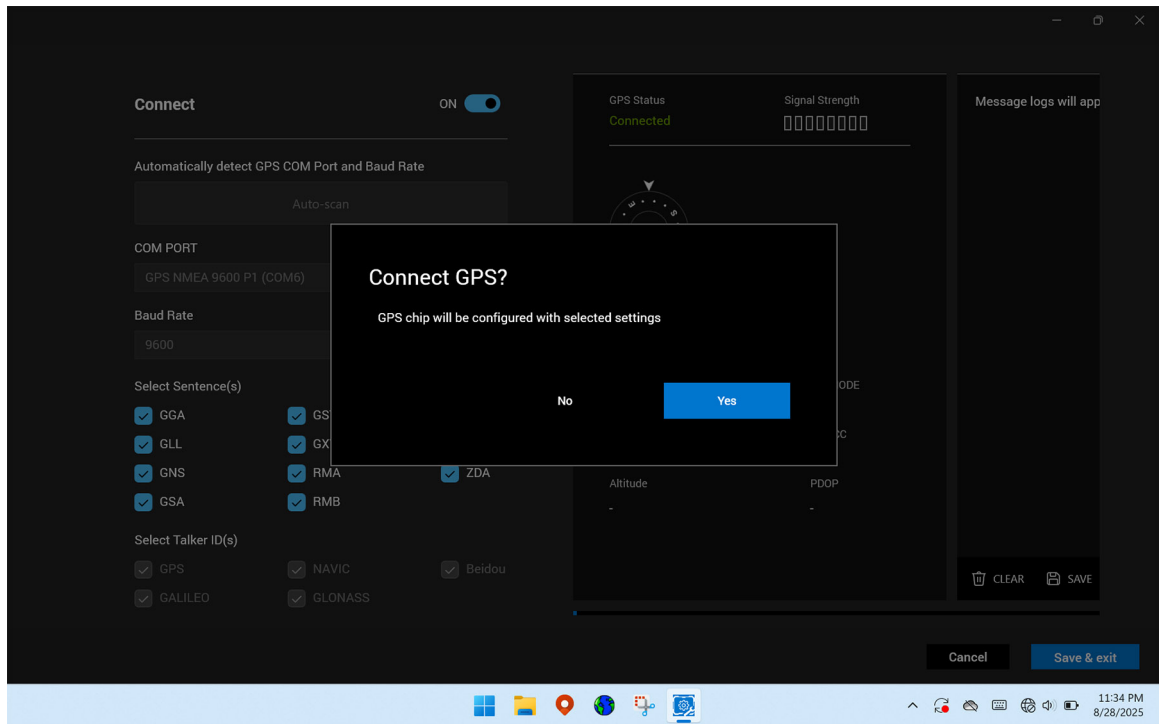


Figure 15. GPS

4. Click **Yes** to confirm.
Dell RCC displays the GPS Status, Signal Strength, Date/Time, and other details indicating GPS is connected.

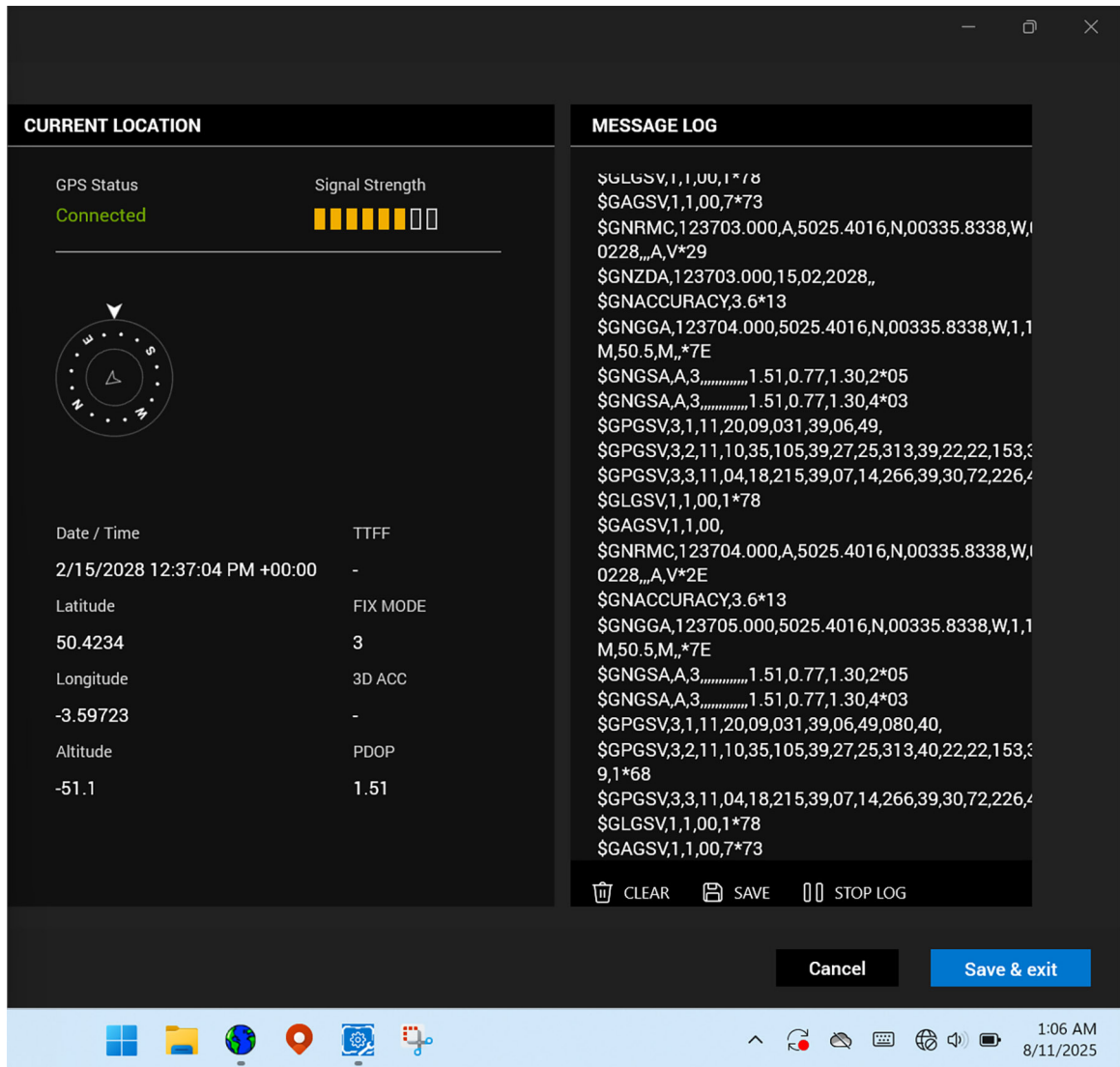


Figure 16. GPS Status

Splitting the GPS COM port

About this task

GPS COM port splitting is a technique that allows multiple applications to access the same GPS data stream from a single GPS device. Only one program can use a COM port at a time, but with a splitter, you can create virtual COM ports that mirror the original data.

Steps

1. Go to **Device Manager > Ports (COM & LPT)** and select the port you want to split.

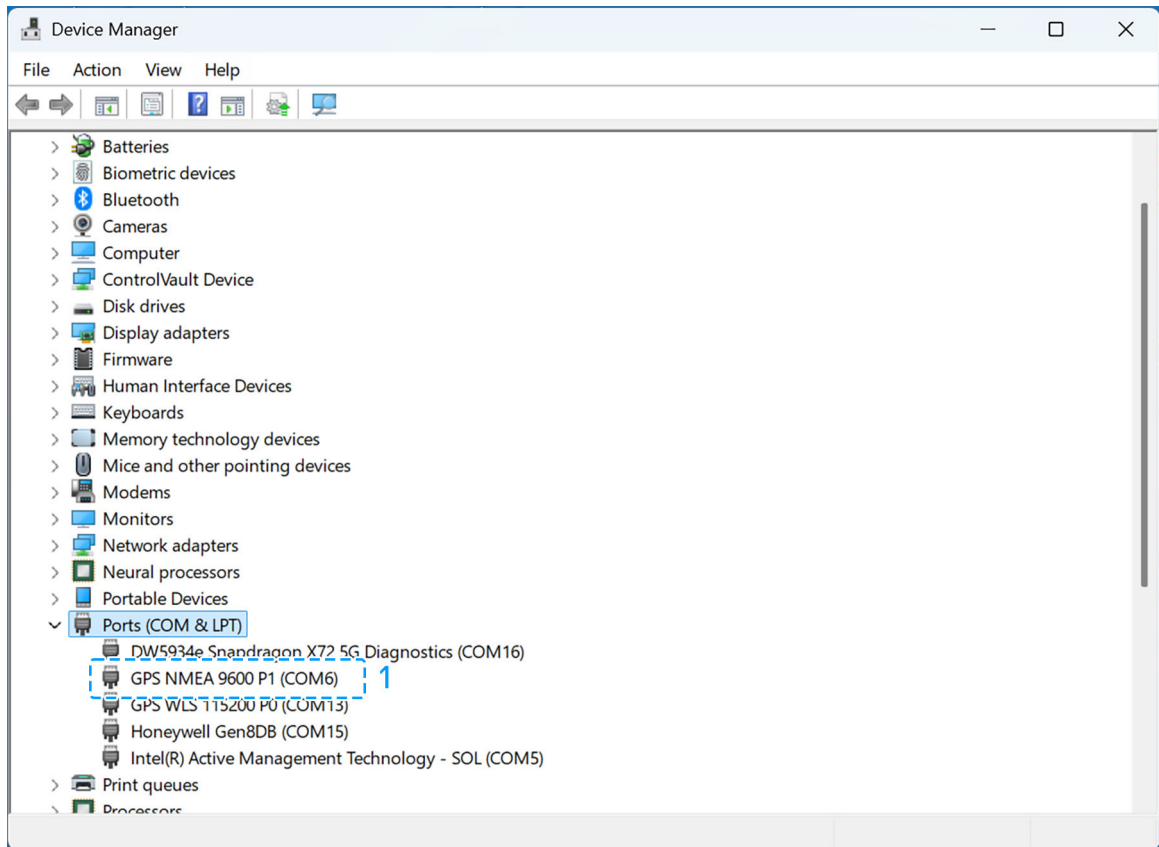


Figure 17. Device manager - Ports (COM & LPT)

The GPS NMEA 9600 P1 (COM6) Properties window opens.

2. Select **Port settings** and click **Advanced**.

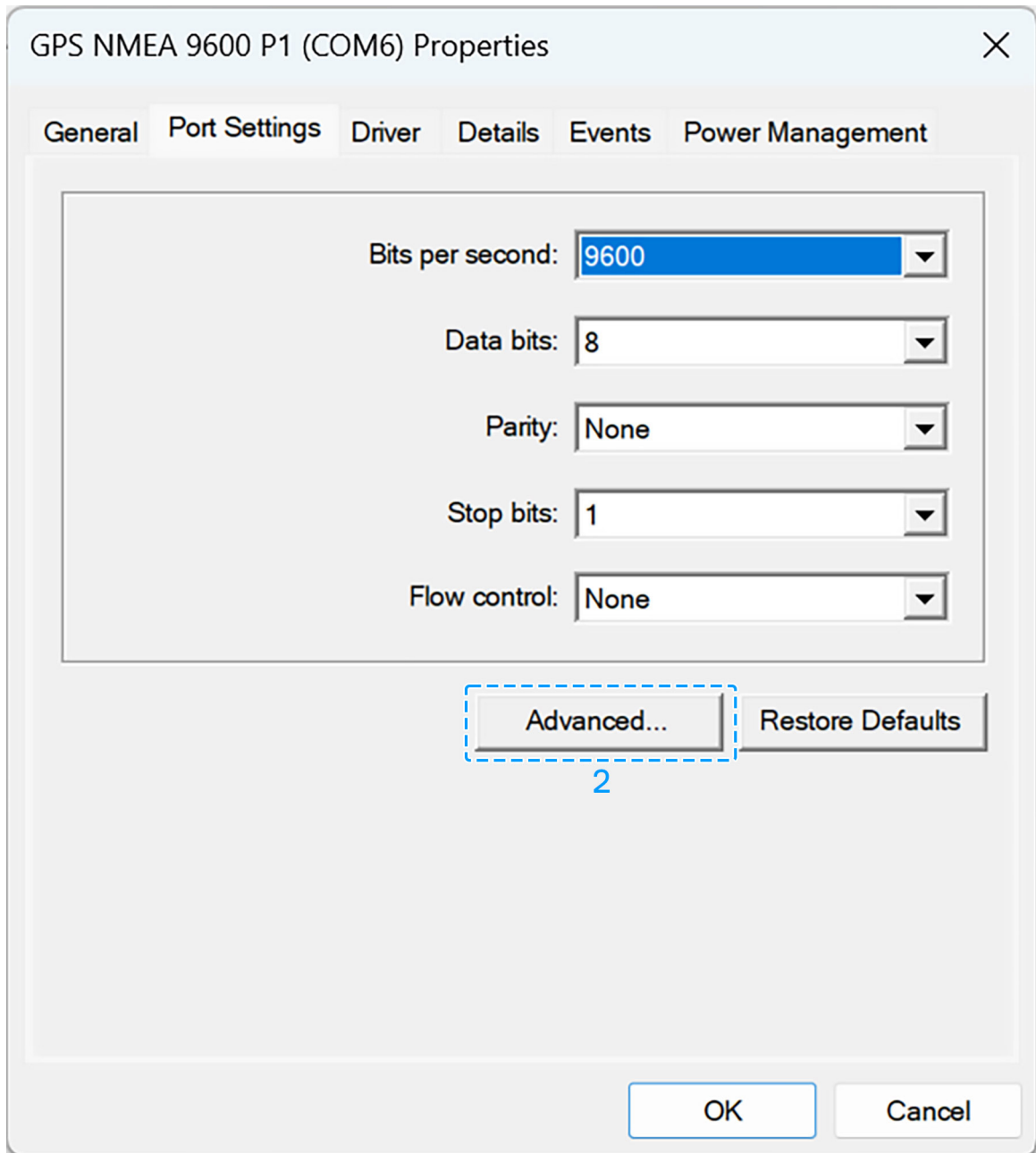


Figure 18. Device manager - Advanced

3. Set the number of split ports using the drop-down menu **Number of splitters:** and click **OK**.

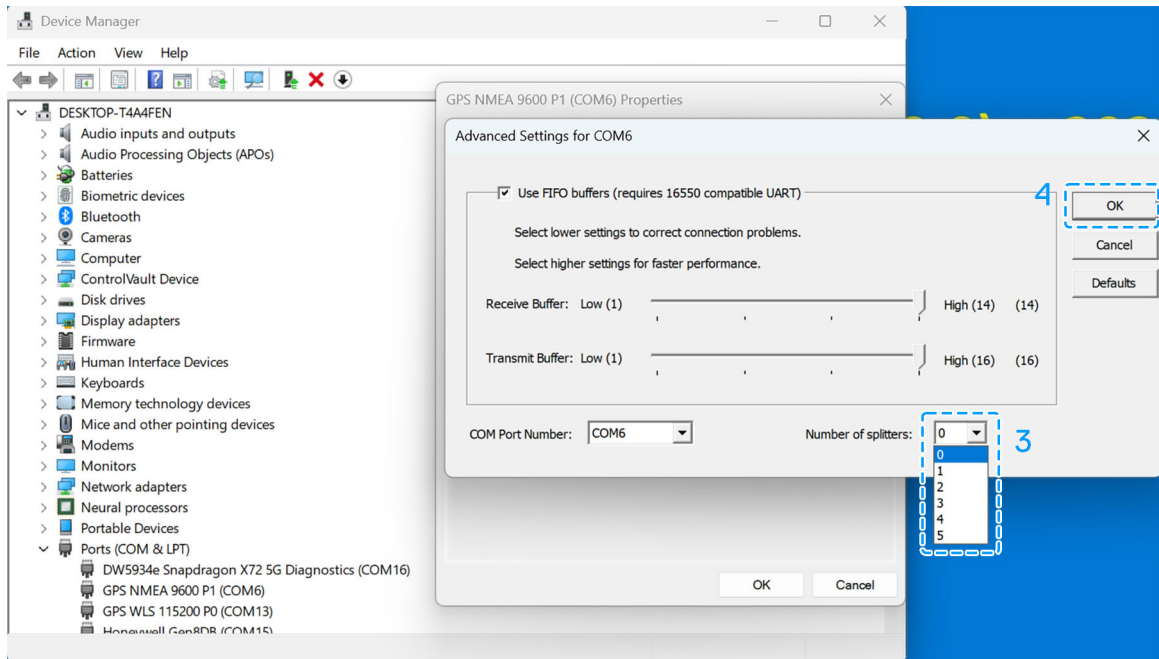


Figure 19. Number of splitters

4. Close GPS NMEA 9600 P1 (COM6) Properties window and verify if the ports are split. NMEA split ports are displayed.

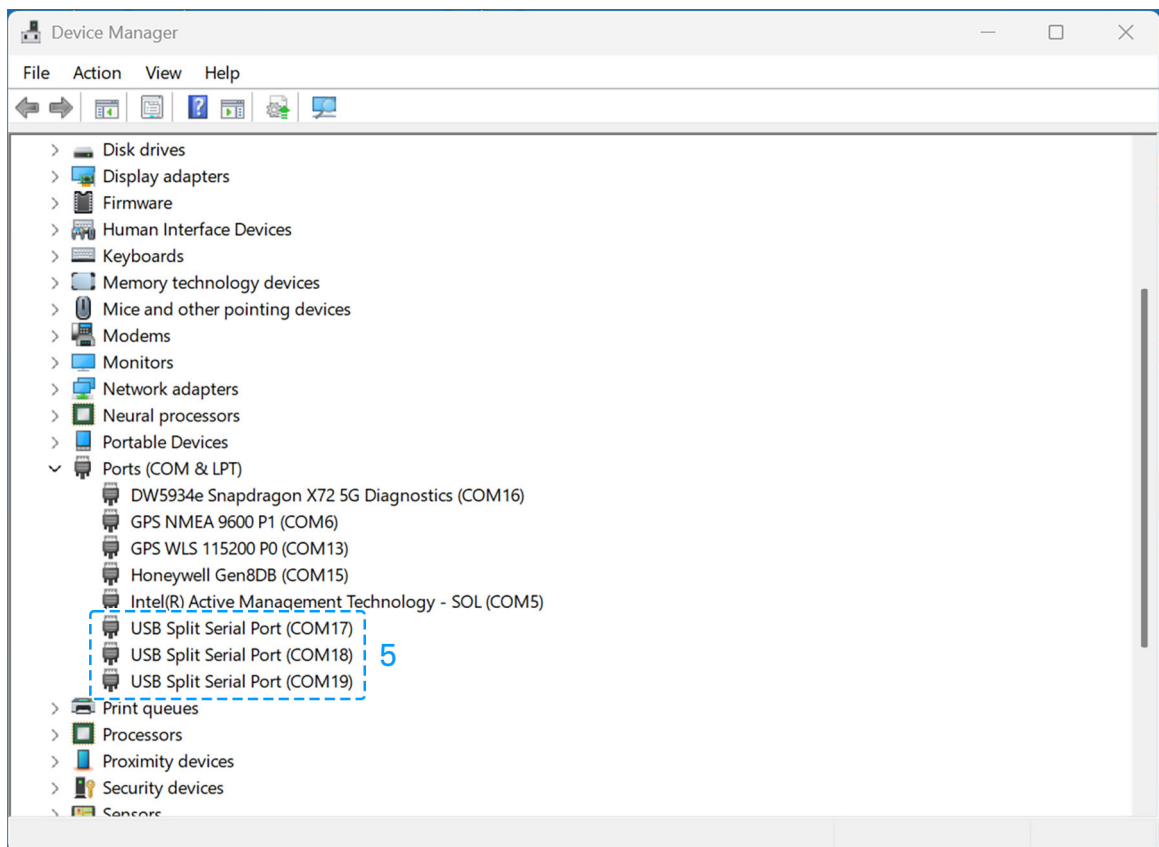


Figure 20. NMEA split port

Audio

The following table lists the audio specifications of your Dell Pro Rugged 12 Tablet RA02260.

Table 15. Audio specifications

Description		Values
Audio controller		Realtek ALC3204-GC
Stereo conversion		Supported
Internal audio interface		Intel High Definition Audio (HDA)
External audio interface		One global headset jack
Number of speakers		Two
Internal-speaker amplifier		Supported
External volume controls		Supported
Speaker output:		
	Average	2 W x 2 = 4 W
	Peak	2.5 W x 2 = 5 W
Microphone		Dual-array microphones

Storage

This section lists the storage options on your Dell Pro Rugged 12 Tablet RA02260.

Your Dell Pro Rugged 12 Tablet RA02260 supports one M.2 2230 solid-state drive.

Table 16. Storage specifications

Storage type	Interface type	Capacity
M.2 2230 solid-state drive, QLC	PCIe NVMe Gen4 x4	2 TB
M.2 2230 solid-state drive, TLC	PCIe NVMe Gen4 x4	256 GB, 512 GB, 1 TB
M.2 2230 solid-state drive, TLC, SED	PCIe NVMe Gen4 x4	256 GB, 512 GB

Media-card reader

The following table provides the specification of media cards that are supported by your Dell Pro Rugged 12 Tablet RA02260.

Table 17. Media-card reader specifications

Description	Values
Media-card slot type	One microSD 4.0 card
Media-cards supported	<ul style="list-style-type: none"> microSecure Digital (mSD) microSecure Digital High Capacity (mSDHC) microSecure Digital Extended Capacity (mSDXC)

Table 17. Media-card reader specifications (continued)

Description	Values
	<ul style="list-style-type: none"> • UHS-I • UHS-II • Multi-Media
<p>NOTE: The maximum capacity of the media-card reader varies depending on the standard of the media card that is inserted in your tablet.</p>	

Camera

The following table lists the camera specifications of your Dell Pro Rugged 12 Tablet RA02260.

Table 18. Front camera specifications

Description	Front camera	
Number of cameras	Two	
Camera type	8M RGB camera/VGA IR camera	
Camera location	Front	
Camera sensor type	CMOS sensor technology	
Camera resolution:		
	Still image	3840 x 2160 megapixels
	Video	1920 x 1080 at 30 fps
Infrared camera resolution:		
	Video	640 x 480 at 30 fps
Diagonal viewing angle:		
	Camera	88.10 degrees
	Infrared camera	77.30 degrees

Table 19. Rear camera specifications

Description	Rear camera	
Number of cameras	One	
Camera type	11M RGB camera	
Camera location	Rear	
Camera sensor type	CMOS sensor technology	
Camera resolution:		
	Still image	3976 x 2736 megapixels
	Video	1920 x 1080 at 30 fps
Infrared camera resolution:		
	Video	N/A
Diagonal viewing angle:		


Table 19. Rear camera specifications (continued)

Description		Rear camera
	Camera	97.0 degrees
	Infrared camera	N/A


Power adapter

The following table lists the power adapter specifications of your Dell Pro Rugged 12 Tablet RA02260.

Table 20. Power-adapter specifications

Description	Option one	Option two
Type	65 W AC adapter, USB Type-C	100 W AC adapter, USB Type-C
Power-adapter dimensions:		
Height	22 mm (0.86 in.)	26.50 mm (1.04 in.)
Width	55 mm (2.16 in.)	60 mm (2.36 in.)
Depth	66 mm (2.59 in.)	122 mm (4.80 in.)
Input voltage	100 VAC–240 VAC	100 VAC–240 VAC
Input frequency	50 Hz–60 Hz	50 Hz–60 Hz
Input current (maximum)	1.70 A	1.70 A
Output current (continuous)	<ul style="list-style-type: none"> ● 20 V/3.25 A (continuous) ● 15 V/3 A (continuous) ● 9 V/3 A (continuous) ● 5 V/3 A (continuous) 	<ul style="list-style-type: none"> ● 20 V/5 A (continuous) ● 15 V/3 A (continuous) ● 9 V/3 A (continuous) ● 5 V/3 A (continuous)
Rated output voltage	<ul style="list-style-type: none"> ● 20 VDC ● 15 VDC ● 9 VDC ● 5 VDC 	<ul style="list-style-type: none"> ● 20 VDC ● 15 VDC ● 9 VDC ● 5 VDC
Temperature range:		
Operating	0°C to 40°C (32°F to 104°F)	0°C to 35°C (32°F to 95°F)
Storage	-40°C to 70°C (-40°F to 158°F)	-40°C to 70°C (-40°F to 158°F)
 CAUTION: Operating and storage temperature ranges may differ among components, so operating or storing the device outside these ranges may impact the performance of specific components.		

Power adapter requirements of Dell Pro Rugged 12 Tablet RA02260

 **NOTE:** If you did not purchase the Dell-branded power adapter that is recommended for your tablet, ensure that the power adapter you use meets the following requirements.

The following table lists the power adapter requirements for your Dell Pro Rugged 12 Tablet RA02260.

Table 21. Power adapter requirements

Description	Value
Power that is required from a power adapter to achieve optimal performance.	65 W
Power that charges the tablet at a slower speed. i NOTE: A warning message may appear informing you about the use of a lower-powered adapter and slower charging speed.	Less than 45 W
Minimum power that is required from a power adapter to operate the tablet and charge the battery. i NOTE: A warning message appears informing you about the use of a lower-powered adapter and slower charging speed.	27 W
USB Power Delivery (PD) fast charging	Supported
ExpressCharge mode	Supported i NOTE: Ensure that the tablet with an 18 Wh battery is connected to a 65 W power adapter for this feature to be supported.

Battery

The following table lists the battery specifications of your Dell Pro Rugged 12 Tablet RA02260.

Table 22. Battery specifications

Description	Option one	Option two
Battery type	2-cell, 35.6 Wh, ExpressCharge, Hot-swappable battery	2-cell, 35.6 Wh, ExpressCharge, Long Cycle Life, Hot-swappable battery
Battery voltage	8.96 VDC	8.96 VDC
Battery weight (maximum)	0.17 kg (0.07 lb)	0.17 kg (0.07 lb)
Battery dimensions:		
	Height	15 mm (0.59 in.)
	Width	103.98 mm (4.09 in.)
	Depth	62.83 mm (2.47 in.)
Temperature range:		
	Operating	-20°C to 60°C (-4°F to 140°F)
	Storage	-20°C to 65°C (-4°F to 149°F)
Battery operating time	Varies depending on operating conditions and can significantly reduce under certain power-intensive conditions	Varies depending on operating conditions and can significantly reduce under certain power-intensive conditions
Battery charging time (approximate) i NOTE: You can control the charging time, duration, start and end time using the Dell Power Manager application. For more information	<ul style="list-style-type: none"> 0°C to 15°C (32°F to 59°F)—4 hours (when the tablet is off) 	<ul style="list-style-type: none"> 0°C to 15°C (32°F to 59°F)—4 hours (when the tablet is off)

Table 22. Battery specifications (continued)

Description	Option one	Option two
about Dell Power Manager, search Dell Support Site.	<ul style="list-style-type: none"> 16°C to 45°C (60.8°F to 113°F)—2 hours (when the tablet is off) 46°C to 50°C (114.8°F to 122°F)—3 hours (when the tablet is off) 	<ul style="list-style-type: none"> 16°C to 45°C (60.8°F to 113°F)—2 hours (when the tablet is off) 46°C to 50°C (114.8°F to 122°F)—3 hours (when the tablet is off)
Coin-cell battery	CR2032	CR2032
<p>CAUTION: Operating and storage temperature ranges may differ among components, so operating or storing the device outside these ranges may impact the performance of specific components.</p> <p>CAUTION: Dell Technologies recommends that you charge the battery regularly for optimal power consumption.</p>		

Power requirements

NOTE: The information in this section is applicable to the European Union (EU) countries.

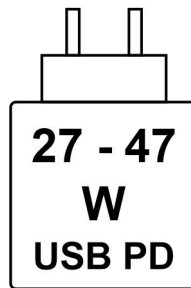


Figure 21. Pictogram for 35.6 Wh battery

The power that is delivered by the charger must be between a minimum of 27 Watts that is required by the radio equipment, and a maximum of 47 Watts in order to achieve the maximum charging speed.

This tablet supports USB Power Delivery (PD) fast charging.

Display

The following table lists the display specifications of your Dell Pro Rugged 12 Tablet RA02260.

Table 23. Display specifications

Description	Values
Display type	12-inch, Full High Definition Plus (FHD+)
Touch options	Yes
Display-panel technology	Wide View Angle (WVA), Color Active Matrix TFT LCD, WLED-Backlit
Display-panel dimensions (active area):	
Height	162.00 mm (6.37 in.)
Width	259.20 mm (10.20 in.)

Table 23. Display specifications (continued)

Description		Values
	Diagonal	305.70 mm (12.04 in.)
Display-panel native resolution		1920 x 1200
Luminance (typical)		1200 nits
Megapixels		2.304
Color gamut		100% sRGB (typical)
Pixels Per Inch (PPI)		188
Contrast ratio (minimum)		1000:1
Response time (maximum)		35 ms
Refresh rate		60 Hz
Horizontal view angle		+/- 88 degrees (minimum)
Vertical view angle		+/- 88 degrees (minimum)
Pixel pitch		0.135 mm x 0.135 mm
Power consumption (maximum)		8.15 W
Anti-glare vs glossy finish		Anti-Glare

Fingerprint reader (optional)

The following table lists the specifications of the optional fingerprint-reader of your Dell Pro Rugged 12 Tablet RA02260.

Table 24. Fingerprint reader specifications

Description	Values
Sensor technology	Capacitive
Sensor resolution	362.86 dpi
Sensor pixel size	0.07 x 0.07

Sensors

The following table lists the sensors of your Dell Pro Rugged 12 Tablet RA02260.

Table 25. Sensor

Sensor support
Ambient-Light Sensor (ALS)
eCompass/Magnetometer
Proximity Sensor (SAR)
Hall Effect Sensor

Table 25. Sensor (continued)

Sensor support
Screen Rotation support
Gyro + Accelerometer (for positional sensing)

GPU—Integrated

The following table lists the specifications of the integrated Graphics Processing Unit (GPU) supported by your Dell Pro Rugged 12 Tablet RA02260.

Table 26. GPU—Integrated

Controller	Memory size	Processor
Intel Arc 140V GPU	Shared system memory	<ul style="list-style-type: none">Intel Core Ultra 7 268V, vPro EnterpriseIntel Core Ultra 7 266V, vPro Enterprise
Intel Arc 130V GPU	Shared system memory	<ul style="list-style-type: none">Intel Core Ultra 5 238V, vPro EnterpriseIntel Core Ultra 5 236V, vPro EnterpriseIntel Core Ultra 5 226V

External display support

The following table lists the external display support for your Dell Pro Rugged 12 Tablet RA02260.

Table 27. External display support

Graphics card	Supported external displays with tablet display enabled	Supported external displays with tablet display disabled
Intel Arc 140V Graphics	3 (includ eDP)	3 (includ eDP)
Intel Arc 130V Graphics	3 (includ eDP)	3 (includ eDP)

Hardware security

The following table lists the hardware security of your Dell Pro Rugged 12 Tablet RA02260.

Table 28. Hardware security

Hardware security
Wedge-shaped lock slot
Trusted Platform Module (TPM) 2.0 discrete
FIPS 140-2 certification for TPM
FIPS 140-3 certification for TPM
TCG Certification for TPM (Trusted Computing Group)
Touch fingerprint reader (palm-rest/power button/MoH/MoC/CV3)
Contacted Smart Card and ControlVault 3 or 3+

Table 28. Hardware security (continued)

Hardware security
Contactless Smart Card, NFC, and ControlVault 3 or 3+
Chassis Intrusion Detection
BIOS - TPM clear and/or system boot lock after chassis intrusion detection

Smart-card reader

Contactless smart-card reader

This section lists the contactless smart-card reader specifications of your Dell Pro Rugged 12 Tablet RA02260.

Table 29. Contactless smart-card reader specifications

Title	Description	Dell ControlVault 3+ contactless smart-card reader with NFC
Felica Card Support	Reader and software capable of supporting Felica contactless cards	Yes
ISO 14443 Type A Card Support	Reader and software capable of supporting ISO 14443 Type A contactless cards	Yes
ISO 14443 Type B Card Support	Reader and software capable of supporting ISO 14443 Type B contactless cards	Yes
ISO/IEC 21481	Reader and software capable of supporting ISO/IEC 21481 compliant contactless cards and tokens	Yes
ISO/IEC 18092	Reader and software capable of supporting ISO/IEC 21481 compliant contactless cards and tokens	Yes
ISO 15693 Card Support	Reader and software capable of supporting ISO15693 contactless cards	Yes
NFC Tag Support	Supports reading and processing of NFC-compliant tag information	Yes
NFC Reader Mode	Support for NFC Forum Defined Reader mode	Yes
NFC Writer Mode	Support for NFC Forum Defined Writer mode	Yes
NFC Peer-to-Peer Mode	Support for NFC Forum Defined Peer to Peer mode	Yes
EMVCo Compliant	Compliant with EMVCO smart-card standards as posted to www.emvco.com	Yes
EMVCo Certified	Formally certified based on EMVCO smart-card standards	Yes
NFC Proximity OS Interface	Enumerates NFP (Near Field Proximity) device for OS to utilize	Yes
PC/SC OS interface	Personal Computer/Smart-card specification for integration of hardware readers into personal computer environments	Yes

Table 29. Contactless smart-card reader specifications (continued)

Title	Description	Dell ControlVault 3+ contactless smart-card reader with NFC
CCID driver compliance	Common driver support for Integrated Circuit-card Interface Device for OS level drivers	Yes
Windows Certified	Device certified by Microsoft WHCK	Yes
Dell ControlVault support	Device connects to Dell ControlVault for usage and processing	Yes
FIDO2 compliance	Dell ControlVault 3 Smart-card reader is compliant with the FIDO SPEC	Yes

NOTE: 125 KHz proximity cards are not supported.

Table 30. Supported cards

Manufacturer	Card
HID	jCOP readertest3 A card (14443a)
	1430 1L
	DESFire D8H
	iClass (Legacy)
	iClass SEOS
NXP/Mifare	Mifare DESFire 8K White PVC Cards
	Mifare Classic 1K White PVC Cards
	NXP Mifare Classic S50 ISO Card
G&D	idOnDemand - SCE3.2 144K
	SCE6.0 FIPS 80K Dual+ 1 K Mifare
	SCE6.0 nonFIPS 80K Dual+ 1 K Mifare
	SCE6.0 FIPS 144K Dual + 1K Mifare
	SCE6.0 nonFIPS 144K Dual + 1 K Mifare
	SCE7.0 FIPS 144K
Oberthur	idOnDemand - OCS5.2 80K
	ID-One Cosmo 64 RSA D V5.4 T = 0 card

Table 31. RFID card

RFID card description	Card type
HID jCOP readertest3 A card (14443a)	ISO/IEC 14443A (Type 4)
NXP/Mifare-Mifare DESFire 8K White PVC Cards	ISO/IEC 14443A (Type 4)
NXP/Mifare-Mifare Classic 1K White PVC Cards	ISO/IEC 14443A (Type 2)
NXP/Mifare-NXP Mifare Classic S50 ISO Card	ISO/IEC 14443A (Type 2)
NXP/Mifare-NXP Mifare Mifare DESFire	ISO/IEC 14443A (Type 4)
G&D idOnDemand-SCE3.2 144K	ISO/IEC 14443A (Type 4)
idOnDemand-Oberthur OCS5.2 80K	ISO/IEC 14443A (Type 4)
HID 1430 1L	ISO/IEC 14443A (Type 2)

Table 31. RFID card (continued)

RFID card description	Card type
HID DESFire D8H	ISO/IEC 14443A (Type 4)
OBERTHUR-Oberthur ID-One Cosmo 64 RSA D V5.4 T=0 card	ISO/IEC 14443 (Type 4)
G&D-SCE6.0 FIPS 80K Dual+ 1 K Mifare	ISO/IEC 14443A (Type 4)
G&D-SCE6.0 non-FIPS 80K Dual+ 1 K Mifare	ISO/IEC 14443A (Type 4)
G&D-SCE6.0 FIPS 144K Dual + 1K Mifare	ISO/IEC 14443A (Type 4)
G&D-SCE6.0 non-FIPS 144K Dual + 1 K Mifare	ISO/IEC 14443A (Type 4)
G&D-SCE7.0 FIPS 144K	ISO/IEC 14443A (Type 4)
FeliCa Standard RC-S962 (RC-S888 chip)	6319-4 (Type 3)
FeliCa Lite-S RC-S966 (RC-S966 chip)	6319-4 (Type 3)
HID DESFIRE 4K Standard - 1450NGGNN	ISO/IEC 14443A (Type 4)
iClass 16K/16 - 2002PGGMN	ISO/IEC 15693 (iClass)
iClass SR 16K/16 - 2002HPGGMN	ISO/IEC 15693 (iClass)
ISO Card MiFARE 1K - 1430NGGNN	ISO/IEC 14443A (Type 2)
iClass 2k Tag - 2060PKSMN	ISO/IEC 15693 (iClass)
iClass Clamshell - 2080PMSMV	ISO/IEC 15693 (iClass)
iClass Prox 16K/16 - 2022BGGMNN	ISO/IEC 15693 (iClass)
NIST PIV1	ISO/IEC 14443A (Type 4)
Oberthur ID-One PIV	ISO/IEC 14443A (Type 4)
OBERTHUR-Oberthur ID-One Cosmo 128K V5.4 card	ISO/IEC 14443A (Type 4)
Gemalto TOP DL GX4 144K card	ISO/IEC 14443A (Type 4)
HID Seos Card	ISO/IEC 14443A (Type 4)

Contacted smart-card reader

The following table lists the contacted smart-card reader specifications of your Dell Pro Rugged 12 Tablet RA02260.

Table 32. Contacted smart-card reader specifications

Title	Description	Dell ControlVault 3+ smart-card reader
ISO 7816 -3 Class A Card Support	Reader capable of reading 5 V powered smartcard	Yes
ISO 7816 -3 Class B Card Support	Reader capable of reading 3 V powered smart-card	Yes
ISO 7816 -3 Class C Card support	Reader capable of reading 1.8 V powered smart-card	Yes
ISO 7816-1 Compliant	Specification for the reader	Yes
ISO 7816 -2 Compliant	Specification for smart-card device physical characteristics (size, and location of connection points).	Yes
T = 0 support	Cards support character level transmission	Yes

Table 32. Contacted smart-card reader specifications (continued)

Title	Description	Dell ControlVault 3+ smart-card reader
T = 1 support	Cards support block level transmission	Yes
EMVCo Compliant	Compliant with EMVCo (for electronic payment standards) smart-card standards as posted to www.emvco.com	Yes
EMVCo Certified	Formally certified based on EMVCO smart-card standards	Yes
PC/SC OS interface	Personal Computer/Smart-card specification for integration of hardware readers into personal computer environments	Yes
CCID driver compliance	Common driver support for Integrated Circuit-card Interface Device for OS level drivers.	Yes
Windows Certified	Device certified by WHCK	Yes
FIPS 201-2/ FIPS 201-3 (PIV/HSPD-12) Compliant using GSA	Device compliant with FIPS 201-2/ FIPS 201-3/PIV/HSPD-12 requirements	Yes
FIDO2 compliance	Dell ControlVault 3 Smart-card reader is compliant with the FIDO SPEC	Yes

Operating and storage environment


This table lists the operating and storage specifications of your Dell Pro Rugged 12 Tablet RA02260.

Airborne contaminant level: G1 as defined by ISA-S71.04-1985

Table 33. Operating and storage environment

Description	Operating	Storage
Temperature range	Normal: 0°C to 40°C (32°F to 104°F)	-51°C to 71°C (-59.8°F to 159.8°F)
	Extreme: -29°C to 63°C (-20.2°F to 145.4°F)	
Relative humidity (maximum)	10% to 95% [maximum dew point temperature = 26°C (78.8°F)]	5% to 95% [maximum dew point temperature = 33°C (91.4°F)]
Vibration (maximum)*	<ul style="list-style-type: none"> Vertical: 1.08 GRMS Transverse: 0.21 GRMS Longitudinal: 0.76 GRMS 	<ul style="list-style-type: none"> Vertical: 7.70 GRMS Transverse: 7.70 GRMS Longitudinal: 7.70 GRMS
Shock (maximum)	40 G†	185 G†
Altitude range	12,192 m (40,000 ft)	12,192 m (40,000 ft)
<p>⚠ CAUTION: Operating and storage temperature ranges may differ among components, so operating or storing the device outside these ranges may impact the performance of specific components.</p> <p>* Measured using a random vibration spectrum that simulates the user environment.</p> <p>† Measured using a 2 ms half-sine pulse.</p>		

ComfortView Plus

 **WARNING: Prolonged exposure to blue light from the display may lead to long-term effects such as eye strain, eye fatigue, or damage to the eyes.**

Blue light is a color in the light spectrum which has a short wavelength and high energy. Chronic exposure to blue light, particularly from digital sources may disrupt sleep patterns and cause long-term effects such as eye strain, eye fatigue, or damage to the eyes.

The display on this tablet is designed to minimize blue light and complies with TÜV Rheinland's requirement for low blue light displays.

Low blue light mode is enabled at the factory, so no further configuration is necessary.

To reduce the risk of eye strain, it is also recommended that you:


- Position the display at a comfortable viewing distance between 20 and 28 inches (50 cm and 70 cm) from your eyes.
- Blink frequently to moisten your eyes, wet your eyes with water, or apply suitable eye drops.
- Take an extended break for 20 minutes every two hours.
- Look away from your display, and gaze at a distant object at 20 ft (609.60 cm) away for at least 20 seconds during each break.

Getting help and contacting Dell

Self-help resources


You can get information and help on Dell products and services using these self-help resources:


Table 34. Self-help resources

Self-help resources	Resource location
Information about Dell products and services	Dell Site
Tips	
Contact Support	In Windows search, type <code>Contact Support</code> , and press Enter.
Online help for operating system	Windows Support Site
Access top solutions, diagnostics, drivers and downloads, and learn more about your tablet through videos, manuals, and documents.	Your Dell tablet is uniquely identified using a Service Tag or Express Service Code. To view relevant support resources for your Dell tablet, enter the Service Tag or Express Service Code at Dell Support Site . For more information about how to find the Service Tag for your tablet, see Locate the Service Tag on your tablet .
Dell knowledge base articles	<ol style="list-style-type: none"> 1. Go to Dell Support Site. 2. On the menu bar at the top of the Support page, select Support > Support Library. 3. In the Search field on the Support Library page, type the keyword, topic, or model number, and then click or tap the search icon to view the related articles.

Contacting Dell

To contact Dell for sales, technical support, or customer service issues, see [Dell Support Site](#).

 **NOTE:** Availability of the services may vary depending on the country or region, and product.

 **NOTE:** If you do not have an active Internet connection, you can find contact information in your purchase invoice, packing slip, bill, or Dell product catalog.

Revision history

Tracks all updates that are made to the document. It typically includes the date of change, version number, and a brief description of the modification. This log helps maintain transparency, accountability, and a clear timeline of progress.

Table 35. Revision history

Revision	Date	Description
A00	10-2025	Original publish date.
A01	02-2026	<ul style="list-style-type: none">• Updated operating system to include Ubuntu Linux.• Removed chassis intrusion prevention lock from hardware security.